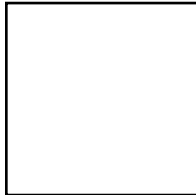


Dave Syverson Auto Center
2310 E MAIN ST
ALBERT LEA, MN 56007



2310 E MAIN ST • ALBERT LEA, MN
(507) 373-1438
WWW.DAVESYVERSON.COM



VALUE PRICE, PLAIN AND SIMPLE.

WE NEED TO ACQUIRE SEVERAL PRE-OWNED VEHICLES AND ARE WILLING TO MAKE YOU AN OFFER TO PURCHASE YOUR VEHICLE OR YOU CAN TRADE UP TO A NEW VEHICLE!

MEET THE DAVE SYVERSON FAMILY OF VEHICLE SPECIALISTS HERE TO HELP YOU EVERY STEP OF THE WAY!



KERBY LODIN
Used Car Manager



TRAVIS STORTROEN
Manager



GEORGE GONZALEZ
Import Sales Manager



BRANDON HARMDIERKS
CDJ Sale Manager



DARRYL SWENSON
Ford & Lincoln Sales Manager



DARREN DAEDLOW
Finance Manager



BRANDON BENSON
Business Manager



GREG HANSON
Sales & Leasing Consultant



CRAIG LOEHR
Sales & Leasing Consultant



NICK OLSON
Sales & Leasing Consultant



ALEX GOLBUFF
Sales & Leasing Consultant



BRANDON GLADUE
Sales & Leasing Consultant



MARK CHRISTOPHERSON
CDJ Sales Consultant



JUSTIN MIKELS
BDC Consultant



JAKE NELSON
CDJ Sales Consultant

At Dave Syverson Auto Center, our customers will forever be our number one priority and would like to extend a special opportunity to you! Due to a shortage of quality pre-owned vehicles in this area, we would like to request the opportunity to acquire your vehicle.

We are willing to make you an offer to purchase your vehicle or you can trade up to a new vehicle. We have a huge selection of new cars and trucks available or choose from any of our late model domestic and imported cars, trucks, vans or sport utility vehicles. With large factory rebates or below market financing and generous trade-in values, we feel confident that you can make this exchange with little or no out of pocket expense and with a monthly payment that fits your budget.

Please bring this invitation or call us at (507) 373-1438 to schedule a convenient appointment and allow us the opportunity to make you an offer. A visual inspection of your vehicle is required to assess its value.



ABOUT DAVE SYVERSON AUTO CENTER

OUR STORY

We do business a little different here at Dave Syverson Auto Center. We asked our customers what they didn't like about the vehicle purchasing process and they definitively answered: Negotiating. With that in mind, we changed to a Value Price way of doing business. We shop the competition so you don't need to and we put our very best price right out in the window for you and everyone else to see. We also handle trades differently in that we pay you an actual cash value. That trade value is good towards any vehicle on our lot and is what your vehicle is worth in real money. It is not a "show you" number that may change as you change vehicles. Also, our sales consultants are not paid on commission; their only job here is to serve you! This means that they get paid the same whether you purchase a \$1 vehicle or a \$100,000 vehicle. Their job is to make sure that you have the best experience you possibly can and get you to the lowest possible trade difference as fast as we can.



THE DAVE SYVERSON AUTO CENTER CARRIES THE AREA'S BEST SELECTION OF QUALITY NEW AND PRE-OWNED VEHICLES AROUND!

THE SYVERSON GUARANTEE

YOU SIMPLY CAN'T BUY THE WRONG CAR!

**7-DAY MONEY BACK
GUARANTEE/
30-DAY EXCHANGE
POLICY**

**\$12.95
OIL CHANGES**

**12 MONTH /
12,000 MILE
LIMITED WEAR
ITEM GUARANTEE**

WHAT IS THE DAVE SYVERSON GUARANTEE?

12 Month/12,000 Mile Limited Wear Item Guarantee

If these items go bad we replace them

- | | | |
|-----------|---------------|----------------|
| • Hoses | • Belts | • Bulbs |
| • Battery | • Brakes | • Wiper Blades |
| • Tires | • Spark Plugs | |

This coverage excludes road hazards and is covered on a condition of wearing out in the 12 months or 12,000 miles. If the above items go bad we replace them. Excludes New Vehicles and Vehicles Sold AS-IS

This guarantee is solely limited to the items that are listed above and does not in any way replace the manufacturer's warranty or an extended service contract. It does not in any facet minimize the possibility of malfunction in other mechanical areas of the vehicle. Extended service contracts are still recommended as protection against costly breakdowns.



**FORD
F-150**



FORD



FORD F-150 HAS BEEN THE
BEST SELLING TRUCK FOR
38 YEARS



FORD EXPLORER

FORD EXPEDITION

FORD EDGE

FORD FUSION



FORD SUPERDUTY

**CHOOSE FROM
THE BEST
SELECTION OF
NEW 2016 &
2015 VEHICLES
IN THE AREA!**



FORD TAURUS

FORD MUSTANG

FORD FOCUS

FORD ESCAPE

LINCOLN



LINCOLN NAVIGATOR

LINCOLN MKC

LINCOLN MKX

LINCOLN MKZ

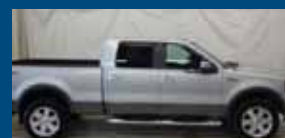
CHECK OUT OUR GREAT SELECTION OF QUALITY PRE-OWNED VEHICLES



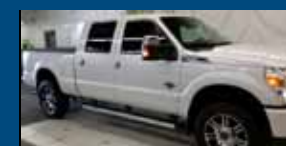
**2013 FORD
FUSION
SE**
#57083
OUR PRICE
\$16,499*



**2011 FORD
EDGE
LIMITED**
#D3720A
OUR PRICE
\$18,999*



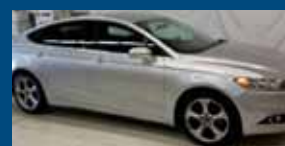
**2008 FORD
F-150
FX4**
#42909A
OUR PRICE
\$19,999*



**2013 FORD
F-350SD
PLATINUM**
#57085
OUR PRICE
\$52,499*



**2012 FORD
F-150
PLATINUM**
#42963A
OUR PRICE
\$32,999*



**2013 FORD
ESCAPE
TITANIUM**
#42926B
OUR PRICE
\$23,999*



CHRYSLER 200



CHRYSLER TOWN & COUNTRY

CHRYSLER 300

DODGE



DODGE CHALLENGER

DODGE CHARGER

DODGE GRAND CARAVAN

DODGE JOURNEY

DODGE DART

**JEEP
GRAND CHEROKEE**

JEEP RENEGADE

JEEP PATRIOT

JEEP



JEEP WRANGLER

JEEP CHEROKEE

JEEP COMPASS

RAM



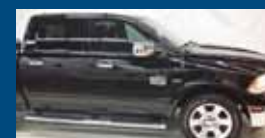
RAM 1500

RAM 2500

RAM 3500

RAM PROMASTER CITY

CHECK OUT OUR GREAT SELECTION OF QUALITY PRE-OWNED VEHICLES



**2012 DODGE RAM
1500
LARAMIE LONGHORN**
#D3546A
OUR PRICE
\$32,499*



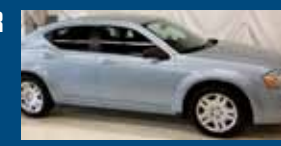
**2008 JEEP
GRAND CHEROKEE
SRT8**
#70610A
OUR PRICE
\$23,999*



**2011 CHRYSLER
300
LIMITED**
#D3749A
OUR PRICE
\$16,999*



**2014 CHRYSLER
200
TOURING**
#57074
OUR PRICE
\$13,499*



**2013 DODGE
AVENGER
SE**
#30724A
OUR PRICE
\$12,799*



**2009 DODGE
JOURNEY
SXT**
#SXT
OUR PRICE
\$12,499*

2310 E MAIN ST • ALBERT LEA, MN 56007 • (507) 373-1438 • WWW.DAVESYVERSON.COM Like Us!

2310 E MAIN ST • ALBERT LEA, MN 56007 • (507) 373-1438 • WWW.DAVESYVERSON.COM Like Us!

Vehicles are subject to prior sale. Excludes tax, title, license and doc fees. With approved credit. See dealer for details. All offers expire 11/30/15. Vehicles are subject to prior sale. Many more to choose from in stock.

Vehicles are subject to prior sale. Excludes tax, title, license and doc fees. With approved credit. See dealer for details. All offers expire 11/30/15. Vehicles are subject to prior sale. Many more to choose from in stock.



VOLKSWAGEN PASSAT

VOLKSWAGEN CC



VOLKSWAGEN TOUAREG

VOLKSWAGEN GOLF

VOLKSWAGEN TIGUAN

VOLKSWAGEN JETTA

NISSAN

NISSAN ARMADA

NISSAN PATHFINDER

NISSAN ALTIMA

NISSAN MAXIMA

NISSAN VERSA NOTE



NISSAN FRONTIER

NISSAN ROGUE

NISSAN SENTRA

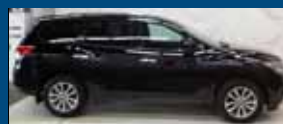
NISSAN JUKE

NISSAN MURANO

CHECK OUT OUR GREAT SELECTION OF QUALITY PRE-OWNED VEHICLES



**2014 NISSAN
ARMADA
PLATINUM**
#57092
OUR PRICE
\$43,999*



**2014 NISSAN
PATHFINDER
SV**
#21722A
OUR PRICE
\$25,499*



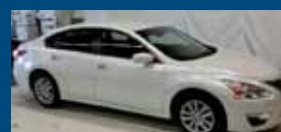
**2013 VOLKSWAGEN
PASSAT
V6 SEL PREMIUM**
#57091
OUR PRICE
\$19,499*



**2013 NISSAN
ROGUE
S**
#21683A
OUR PRICE
\$17,499*



**2010 VOLKSWAGEN
JETTA
SE**
#21724B
OUR PRICE
\$9,999*



**2014 NISSAN
ALTIMA
2.5**
#57078
OUR PRICE
\$13,999*

DAVE SYVERSON SERVICE DEPARTMENT

**\$12.95/\$15.95
OIL CHANGE***

**Includes Up to 5 Qts. of
Standard Motor Oil**

Excludes diesels and synthetic oil.

*See store for details. Not valid with any other offers.
Offer expires 11/30/15.

**MANAGERS
SPECIAL**

**5% OFF ANY SERVICE
OR MAINTENANCE
UP TO \$500.00**

*See store for details. Offer expires 11/30/15.

WHY SERVICE YOUR VEHICLE WITH US?

Dave Syverson Auto Center has been servicing and repairing vehicles for many years now, in fact, we have been a reputable vehicle sales and service department since 1966. Throughout our many years of vehicle service experience, we have always put the quality of work we do above all else when it comes to each and every repair or maintenance job we perform. We know that you rely on your vehicle for so much and not having it perform its best is just not an option. Even if your vehicle is not one of the new brands we sell, if it needs repair or maintenance, chances are our mechanics can fix it!

MEET THE DAVE SYVERSON SERVICE TEAM



ANDY NELSON
Parts & Service
Director



DAVE DEVRIENDT
Chrysler Service
Manager



NATE CREWS
Service Manager



ROBYN LODIN
Service Advisor



JACOB ABREGO
Service Advisor



RANDY GOODNATURE
Parts Manager



WAYNE THOMPSON
Chrysler Parts Advisor



TIM BEYER
Warranty Administrator



BRENT KIKER
Body Shop Manager



MARC RASMUSSEN
Assistant Body Shop
Manager

Service Department Hours

Monday 7:30AM - 5:30PM

Tuesday 7:30AM - 5:30PM

Wednesday 7:30AM - 5:30PM

Thursday 7:30AM - 5:30PM

Friday 7:30AM - 5:30PM

Saturday 8AM - 12PM

Sunday Closed

2310 E MAIN ST • ALBERT LEA, MN 56007 • (507) 373-1438 • WWW.DAVESYVERSON.COM Like Us!

2310 E MAIN ST • ALBERT LEA, MN 56007 • (507) 373-1438 • WWW.DAVESYVERSON.COM Like Us!

Vehicles are subject to prior sale. Excludes tax, title, license and doc fees. With approved credit. See dealer for details. All offers expire 11/30/15. Vehicles are subject to prior sale. Many more to choose from in stock.